

# Owl Talon™ 3

## Data Diode Platform

SECURE, FLEXIBLE, EASY ONE-WAY TRANSFERS

### KEY BENEFITS

- Secure, hardware-enforced, one-way data transfers
- Multiple, simultaneous data types & protocols on a single device
- Modern, web-based user interface
- Easier and faster to configure than ever before
- Long-lasting, set-and-forget reliability
- Available in a compact 1U hardware form factor
- Support for additional COTS compute platforms coming soon
- Developed using the Microsoft Secure Development Lifecycle
- Improved security features, including enhanced SELinux enforcement with access and permission controls, a BIOS password to prevent unauthorized access and modifications, AIDE to detect unauthorized activities, and disk encryption for added protection

### The Data Diode, Reinvented.

25 years ago, Owl launched the first commercialized, patented data diode to the market. Now, Owl is reinventing the data diode again.

Building on a quarter decade of one-way networking expertise and customer feedback, Owl Talon™ 3 is the latest, revolutionized iteration of Owl's award-winning, NSA-approved data diode platform, designed for fast and easy configuration with an all new, modern user interface, unmatched interoperability, and secure, reliable operation.

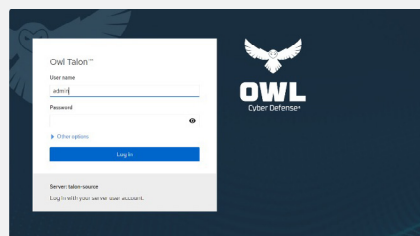
To save you additional time and SWaP, Talon 3 can support multiple, simultaneous data flows and protocols on one device. With an extensible foundation for a broad range of OT and IT protocols and interfaces, Talon 3 enables all your one-way data transfer use cases.

Learn more at [owlciberdefense.com/talon3/](http://owlciberdefense.com/talon3/).

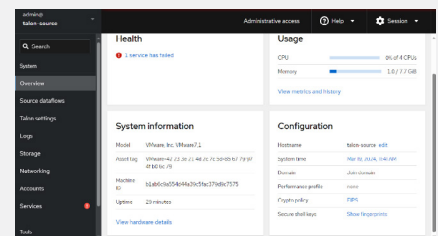
### Unmatched Ease of Use

Featuring a modern, web-based user interface, Talon 3 is extremely easy to use and get data flowing quickly in as few as five simple steps. These steps can be achieved in just a few clicks, getting you up and running faster than ever before.

Login Screen



Overview Screen



### TALON 3 USER INTERFACE

## HARDWARE PLATFORMS

We are excited to offer Talon 3 to new customers, as well as our existing OPDS-1000 customers. Coming soon, Talon 3 will be supported on a whole new range of compute platforms, featuring DIN rail and data center options.

## TECHNICAL SPECIFICATIONS

### PROTOCOLS SUPPORTED

- Syslog
- SMTP (email)
- SNMP Traps
- UDP (unicast, multicast, broadcast)
- Virtual Screen View
- NTP

### THROUGHPUT

- 26 Mbps
- 1G (coming soon)

### CERTIFICATIONS

- FCC Class B Compliance
- CE mark
- CB certificate
- IEC/EN 62368-1
- CAN/CSA-C22.2 62368-1:2014
- VCCI-B
- TUV
- Based on EAL-certified technology

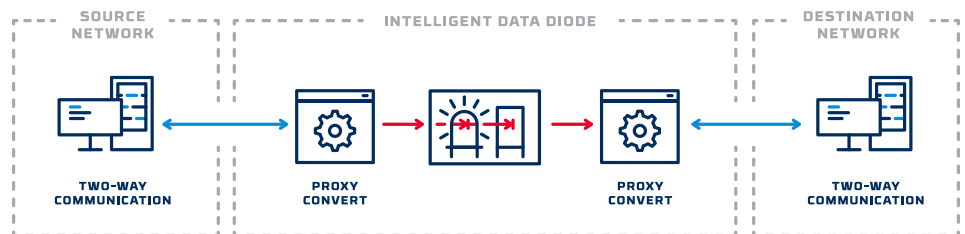
## Multiple Use Cases on One Device

Talon 3 can “do it all” with multiple, simultaneous protocols and dataflows on one device, allowing you to save space and leverage the same system as your use case needs evolve. Talon 3 currently supports Syslog, SMTP (email), SNMP Traps, UDP (unicast, multicast, and broadcast), Virtual Screen View, and NTP. In subsequent quarterly releases, Talon 3 will support AVEVA® PI System, File Transfer, and High Availability.

## One-Way in a Two-Way World

One-way data transfers of two-way protocols requires meeting the expectations of a two-way world, including handshakes and acknowledgements (positive or negative), to function. The “secret sauce” of Talon 3 is in providing a secure one-way transfer while maintaining simultaneous, two-way communications with both the source network and the destination network to avoid disruption. This is accomplished through proxies that run on each side of Owl data diodes.

The source side proxy communicates with the source network acknowledging the receipt of packets before extracting the packet payload, repackaging it in a proprietary format, and sending it across the data diode. On the destination side, the destination side proxy extracts the payload, builds a new packet around it using the original protocol, and sends the data on its way. In this way, the data diode achieves a secure one-way transfer in the middle of two, two-way exchanges.



If you are interested in learning more about Talon 3 and want to speak with a member of our team, please visit [owlcyberdefense.com/talon3/](https://owlcyberdefense.com/talon3/) and fill out the form to get in touch with us. We are excited to chat with you and learn more about your use cases.



Owl Cyber Defense Solutions, LLC leads the world in data diode and cross domain network cybersecurity. With a constant focus on customers in the military, government, critical infrastructure, and commercial communities, Owl develops market-first, one-way data

For more information on Owl, or to schedule a demo, visit [www.owlcyberdefense.com](https://www.owlcyberdefense.com)